

ClodPi Labs ATOM Hub Home Assistant Configure ZigBee Devices Steps

ClodPi Labs ATOM Hub for Home Assistant can be integrated with ZigBee -Wave module thereby easily allowing you to connect many off-the-shelf Zigbee based devices directly to Home Assistant, using one of the many available Zigbee coordinators.

Please check the compatible ZigBee devices here:

Prerequisite:

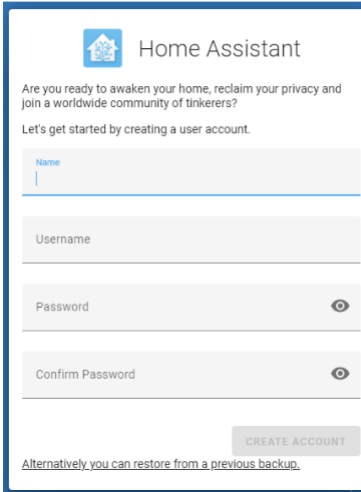
User should be ready with below listed items beforehand:

- ClodPi Labs ATOM Hub for Home Assistant device
 - Onboard ATOM Hub to Home Assistant platform and account created
 - ZigBee device which you want to integrate with ATOM Hub. Make sure the device is in Pairing mode.
-

Steps to configure:

Step 1. ATOM Hub – Logon to Home Assistant Home page:

- Connect power and internet to your ATOM Hub device
- Notice the Red and Blue LEDs on the device are ON
- Take a laptop / smart phone
- Connect it to the same network as your ATOM Hub device is connected to
- On your Laptop / Smart phone, open a browser
- Enter: <http://homeassistant.local:8123>
- Home Assistant application Home page should open up as shown in adjacent image
- Log in to Home Assistant using your credentials



Home Assistant

Are you ready to awaken your home, reclaim your privacy and join a worldwide community of tinkerers?
Let's get started by creating a user account.

Name

Username

Password

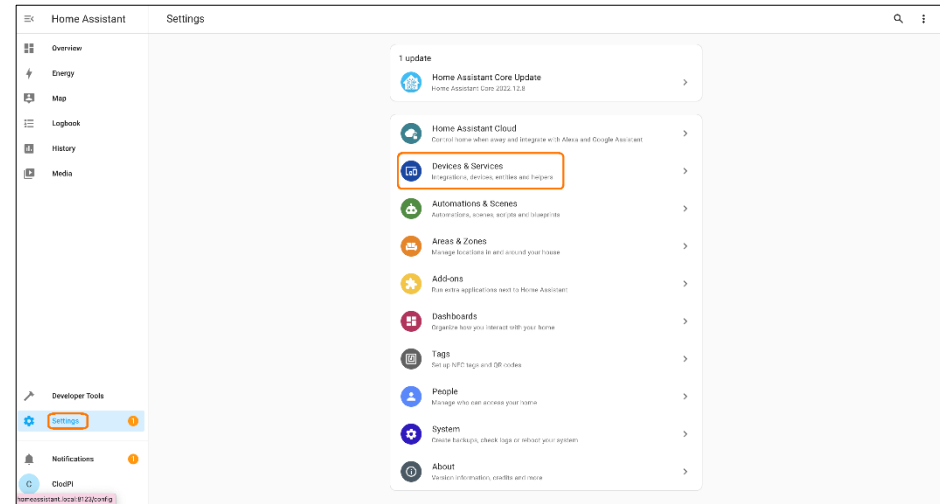
Confirm Password

CREATE ACCOUNT

Alternatively you can restore from a previous backup.

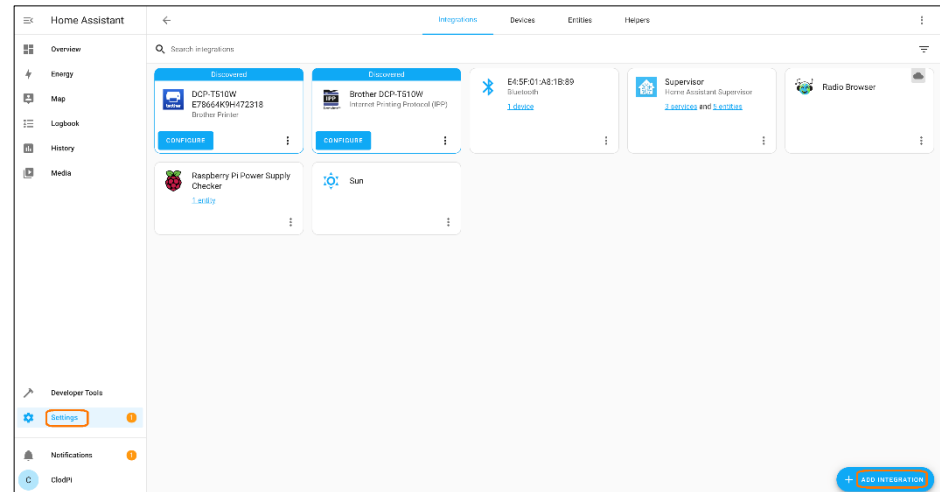
Step 2. Settings > Devices & Services

- Click: Settings
- Settings options will be displayed
- Click: Devices & Services



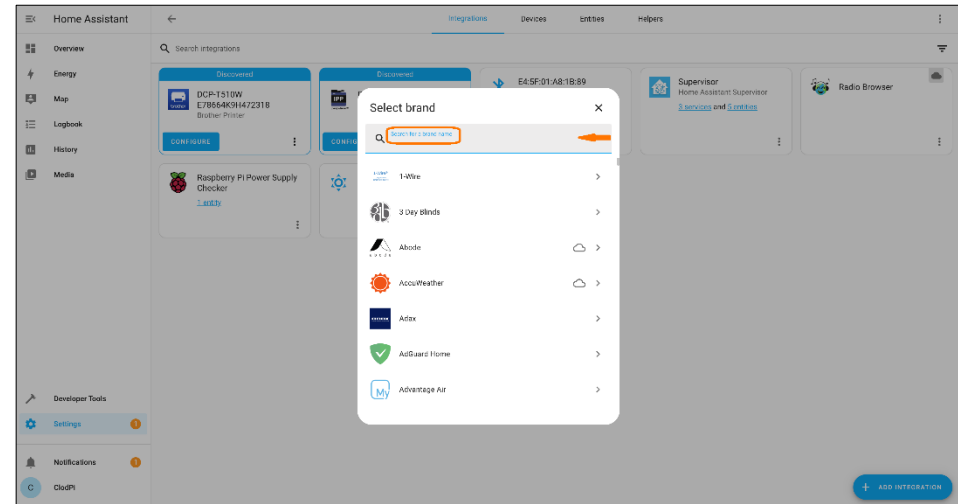
Step 3. Integrations tab:

- Click “Add Integrations” button available at the bottom right of the page



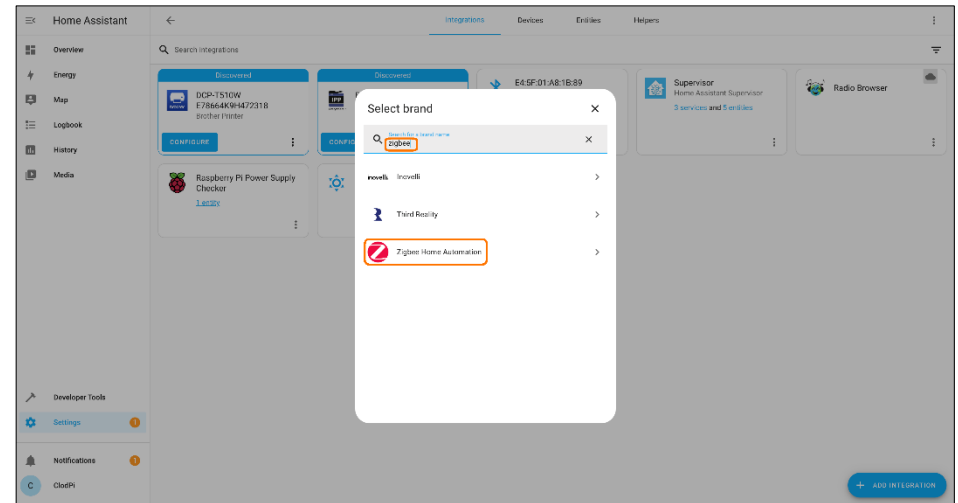
Step 5. Select brand:

- A pop-up listing all the available brands will be displayed
- User can search for the desired brand here



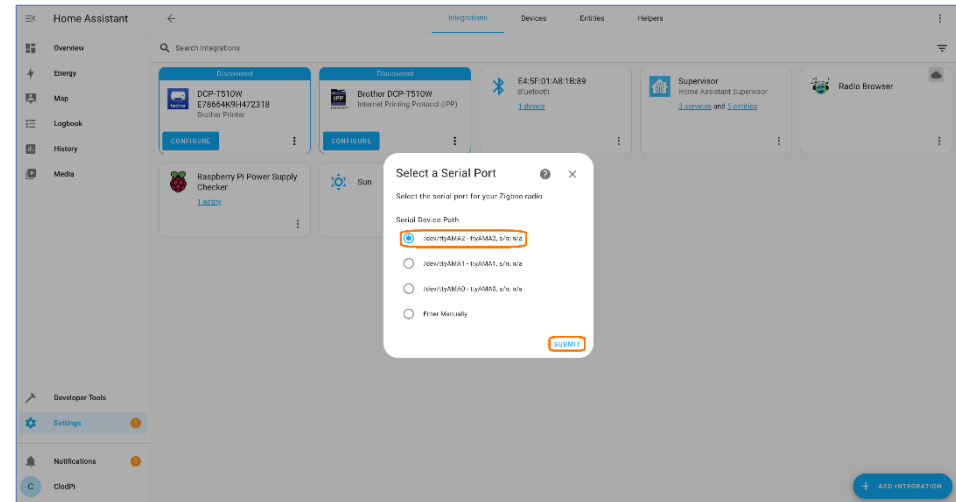
Step 6. Search:

- In Search box, enter: Zigbee
- “Zigbee Home Automation” option will be listed
- Select the option: Zigbee Home Automation



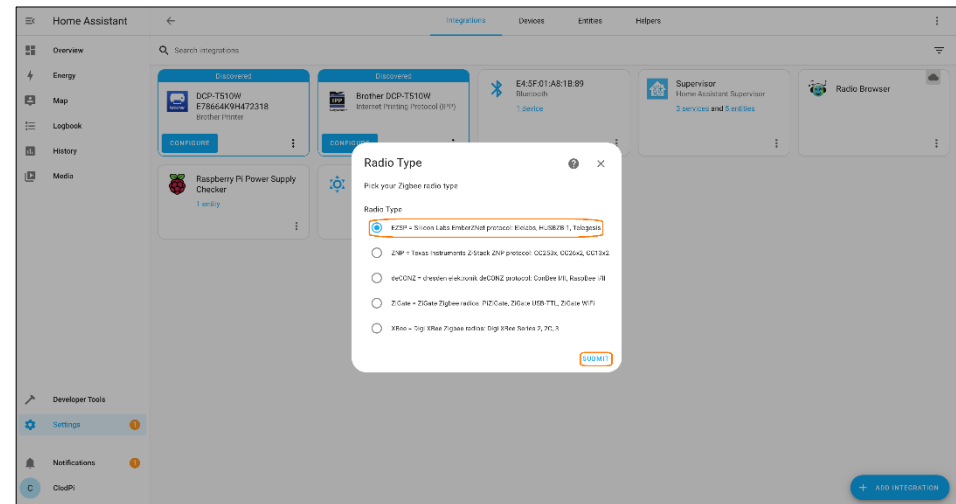
Step 7. Serial Port:

- A pop-up listing all the available Serial Port will be displayed
- Select the option as highlighted in adjacent image
- Click: Submit button



Step 8. Radio Type:

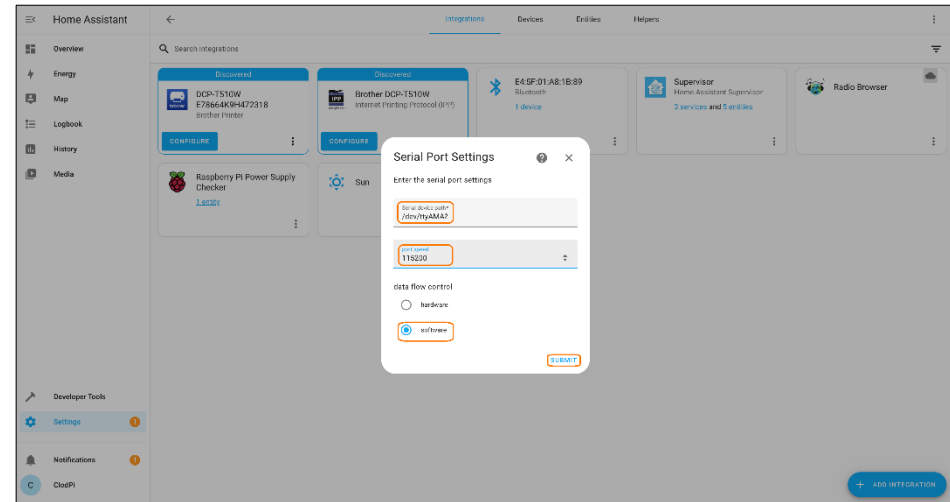
- A pop-up listing all the available Radio Type will be displayed for Zigbee
- Select the option as highlighted in adjacent image
- Click: Submit button



Step 9. Serial Port Settings:

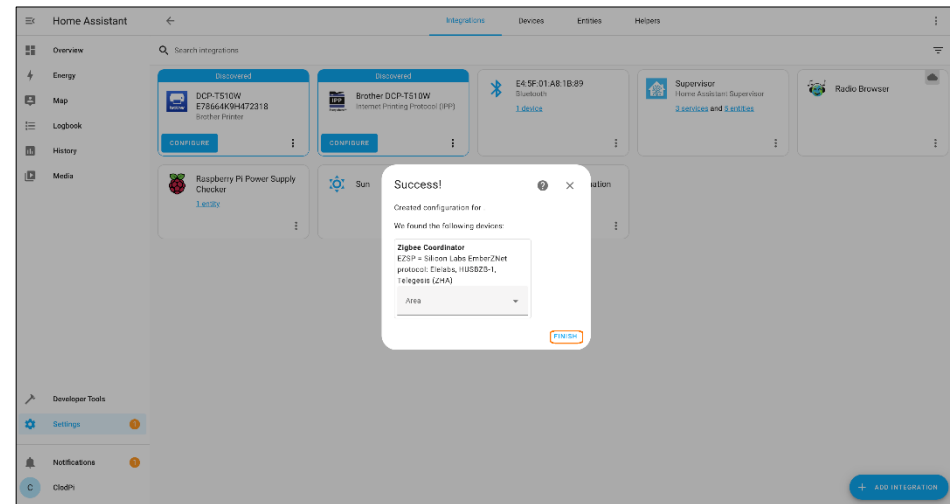
By default, the values for below fields will be displayed.

- Serial device path: /dev/ttyAMA2
- port speed: 115200
- data flow control: software
- Click: Submit



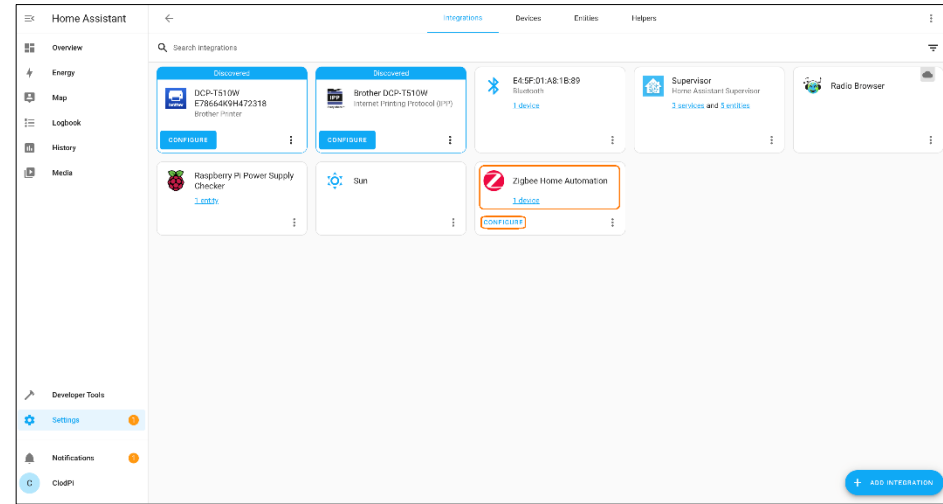
Step 9. Success message:

- A success message will be displayed for configuration and will list any Zigbee device that was found.
- Click: Finish



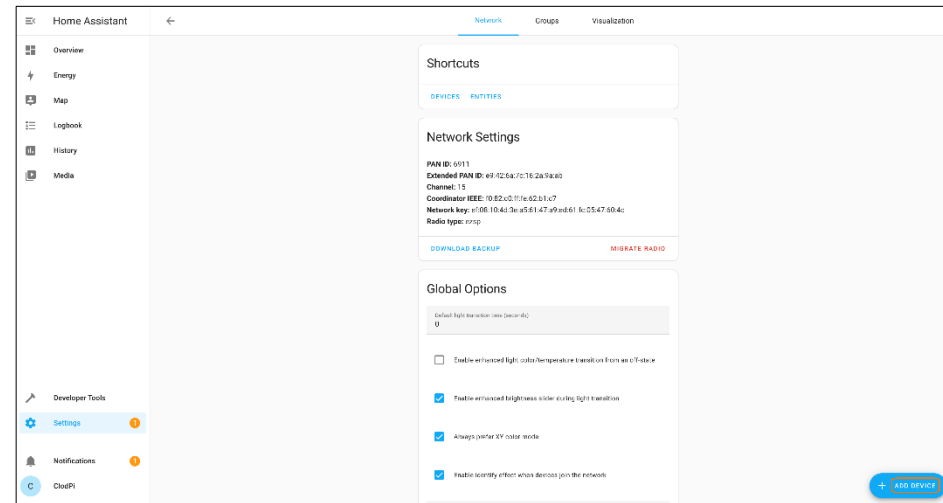
Step 10. Zigbee Home Automation:

- On success, you will navigate to Integrations tab
- Zigbee Home Automation tile will be displayed
- Click: Configure



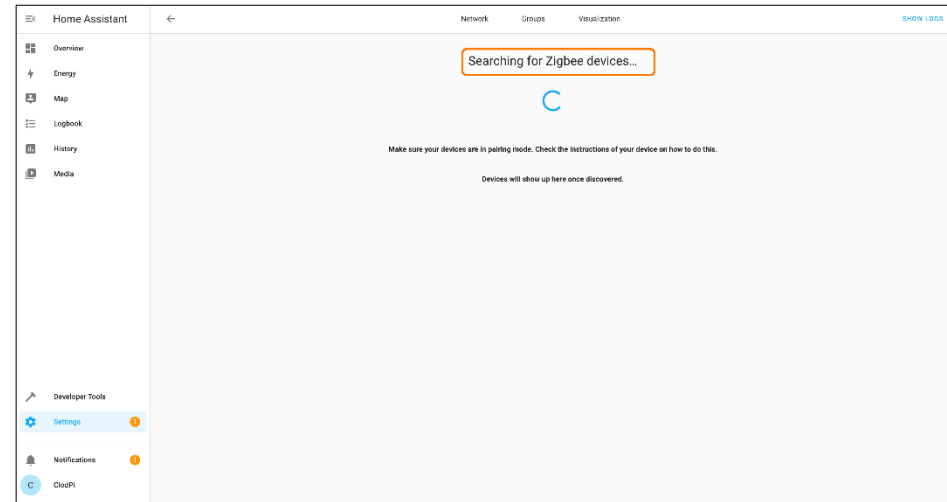
Step 11. Add Device:

- Now you need to click: Add Device
** to add Zigbee devices*



Step 12. Search Zigbee devices:

- Application will initiate search for available Zigbee devices
- Once found, the devices will be listed



Now you can proceed with other use cases with your Home Automation using ATOM Hub for Home Assistant!