

How to install battery in to ClodPi Labs ATOM Hub for Home Assistant?

ClodPi Labs ATOM Hub for Home Assistant does not come with pre-installed battery. Before you start using the ATOM Hub device, battery installation has to be done. Below are the suggested steps to install / replace the battery

Pre-Requisite:

- 1) We need to open up the ATOM Hub enclosure using a screw driver (PH0 / PH1)
- 2) Buy locally a battery "CR2032", 3 Volts.

Steps:

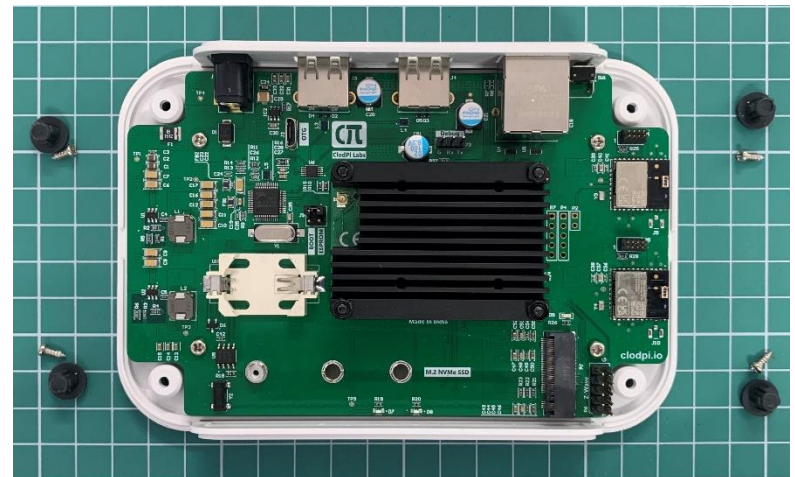
- 1) Take the device, do not connect to power and internet.



- 2) Keep the device upside down
- 3) Remove the rubber feet.
- 4) Take a screw driver (PH0 / PH1) and remove all the four screws



- 5) Cautiously pick the device and keep it in a way with cover is at the top
- 6) Remove the top cover
- 7) Observe a battery slot labelled U10 (highlighted in blue – adjacent image)

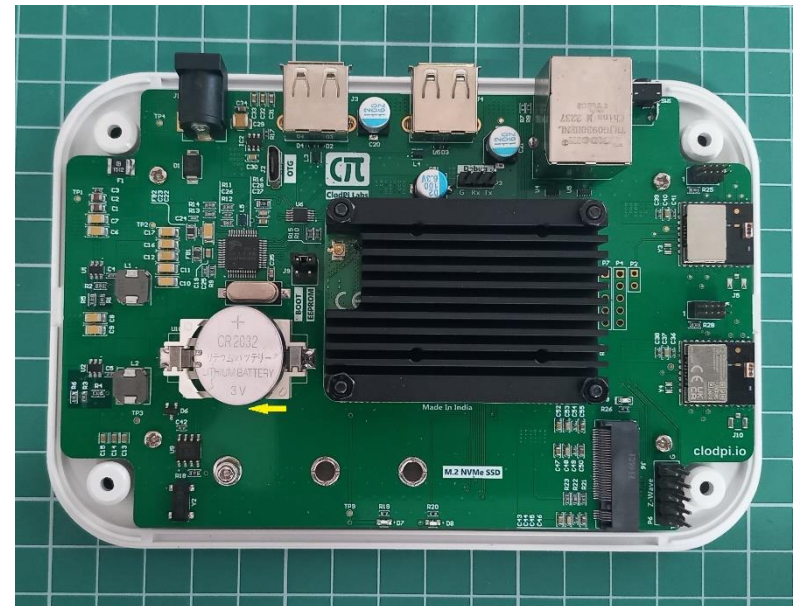


8) Battery placement:

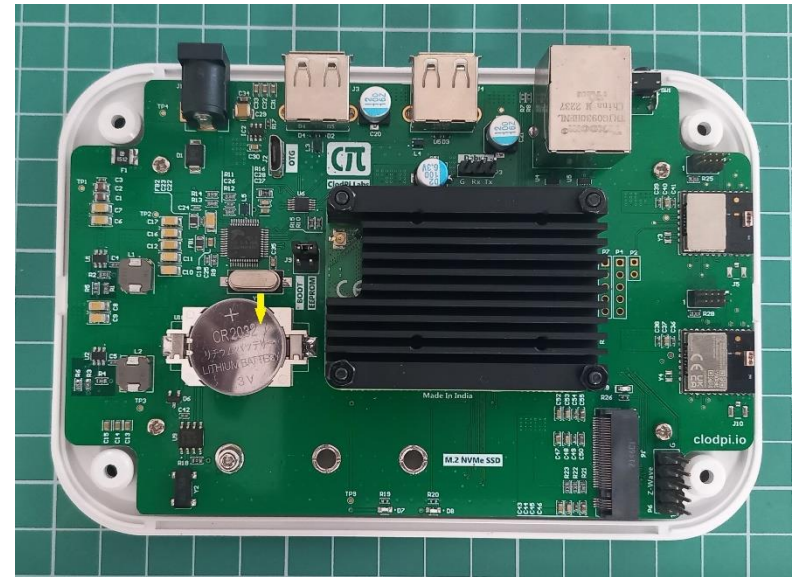
- Remove the battery from the package



- Slide it into the battery slot as shown in adjacent image with battery slipping under the two teeth.



- Hold the ATOM Hub base board from the left side firmly.
- Push the battery from right side and press.
- The battery should get fixed into the slot.



- 9) Place the top cover
- 10) Keep the device upside down
- 11) Tighten all the 4 screws
- 12) Place back all the 4 Rubber Feet
- 13) Keep the device with cover on the top. Your device is ready to use again.